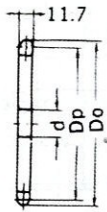
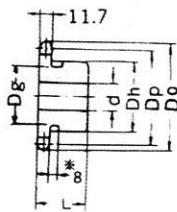


ANSI 60 Standard Sprocket

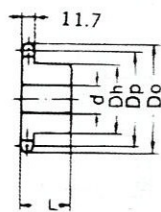
A TYPE



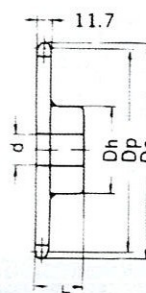
B TYPE



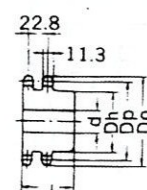
B TYPE



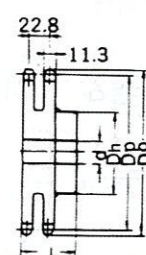
BW TYPE



DUPLEX B TYPE



DUPLEX BW TYPE



Dimension:mm

No. of Teeth	Pitch Dia Dp	Outside Dia Do	A Type			B Type / BW Type					Duplex B Type / Duplex BW Type						
			Bore : d	Approx. WT. (kg)	Material	Bore : d		Hub		Approx. WT (kg)	Material	Bore : d		Hub		Approx. WT (kg)	Material
						Min.	Max.	Dh	L			Min.	Max.	Dh	L		
8	49.78	57	10	0.09		10	15.9	37.3	31.8	0.35	*						
9	55.70	63	10	0.10		10	24	43	32	0.40	*						
10	61.65	70	14	0.20		14	30	49	32	0.49	*						
11	67.62	76	14	0.26		14	32	51	32	0.60	*	16	24	39	50	0.70	
12	73.60	83	14	0.30		14	32	51	32	0.69	*	16	26	44	50	0.80	
13	79.60	89	14	0.37		14	35	57	32	0.81	*	16	30	50	50	1.10	
14	85.61	95	16	0.43		14	38	62	32	0.96	*	18	35	60	50	1.30	
15	91.62	101	16	0.51		16	42	68	32	1.10	*	18	40	66	56	1.70	
16	97.65	107	16	0.60		16	45	73	32	1.30	*	18	45	72	56	2.00	
17	103.67	113	16	0.68		16	45	73	32	1.40	*	18	48	78	56	2.40	
18	109.71	119	16	0.75		16	50	83	40	2.00	*	18	50	82	56	2.80	
19	115.74	126	16	0.88		16	50	83	40	2.10	*	18	55	90	56	3.10	
20	121.78	132	16	0.96		16	50	83	40	2.20	*	18	65	94	56	3.60	
21	127.82	138	16	1.10		16	50	83	40	2.30	*	23	65	100	56	4.10	
22	133.86	144	16	1.15		16	50	83	40	2.50	*	23	65	100	56	4.25	
23	139.90	150	16	1.20		16	50	83	40	2.50	*	23	65	100	56	4.40	
24	145.95	156	16	1.40		16	50	83	40	2.60	*	23	65	100	56	4.60	
25	151.99	162	16	1.51		16	50	83	40	2.70	*	23	80	120	56	4.80	
26	158.04	168	16	1.65		16	50	83	40	2.90	S35C (B TYPE)	23	80	120	56	5.00	
27	164.09	174	16	1.70		16	50	83	40	3.00		23	80	120	56	5.30	
28	170.14	180	16	1.90		16	50	83	40	3.10		23	80	120	56	5.50	
29	176.20	187	16	2.05		16	50	83	40	3.20		23	80	120	56	4.25	
30	182.25	193	20	2.25	SS41	20	50	83	40	3.40		23	80	120	56	4.40	
31	188.30	199	20	2.40		20	50	83	40	3.40		28	85	130	56	6.50	
32	194.35	205	20	2.55		20	50	83	40	3.55		28	85	130	56	6.80	
33	200.41	211	20	2.70		20	50	83	40	3.70		28	85	127	56	7.00	
34	206.46	217	20	2.90		20	50	83	40	3.85		28	85	127	56	7.40	
35	212.52	223	20	3.12		20	50	83	40	4.00		28	85	127	56	7.60	
36	218.57	229	20	3.21		20	50	83	40	4.20		28	85	127	56	7.80	
37	224.63	235	20	3.45		20	50	83	40	4.40		28	85	127	56	8.00	
38	230.69	241	20	3.56		20	50	83	40	4.60		28	65	98	56	8.00	
39	236.74	247	20	3.83		20	50	83	40	4.80		28	85	127	56	9.20	
40	242.80	253	20	4.05		20	50	83	40	4.95		28	85	127	56	9.70	
41	248.36	260	20	4.22		20	60	93	45	5.10		28	65	98	56	9.70	
42	254.92	260	20	4.37		20	60	93	45	5.50		28	70	107	56	11.00	
45	273.09	284	20	5.08		20	60	93	45	6.00		28	70	107	71	12.80	
48	291.27	302	20	5.75		20	60	93	45	6.70		28	70	107	71	14.00	
50	303.39	314	20	6.25		20	60	93	45	7.40		28	70	107	71	16.00	
54	327.63	338	20	7.25		20	60	93	45	7.90		28	70	107	71	18.00	
60	363.99	375	20	9.00		20	60	93	45	8.90	SS41 (BW TYPE)	28	70	107	71	21.50	SS41 (DUPLEX BW TYPE)
65	394.30	405	20	10.60		20	65	107	45	10.60		28	70	107	71	26.00	
70	424.61	436	20	12.20		20	65	107	45	12.80		28	70	107	71	29.00	
75	454.92	466	20	13.00		20	65	107	45	14.40		28	70	107	71	29.00	
80	485.23	496	20	14.00		20	65	107	45	16.30		28	85	128	71	40.50	
85	515.54	527	20	15.90		20	65	107	45	17.30		28	85	128	71	47.00	
90	545.85	557	20	18.30		20	65	107	45	22.00							

NOTE: 1. Sprocket marked with an asterisk (*) has a groove at the external circumference of hub. Groove diameters (Dg) are : 8T=27.30mm, 9T=33.20mm, 10T=39.50mm, 11T = 45.80 mm
 2. B-type solid sprockets over 30 teeth made by S35C are available.