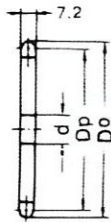
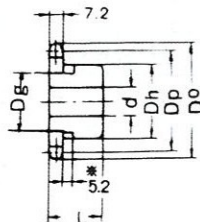


ANSI 40 Standard Sprocket

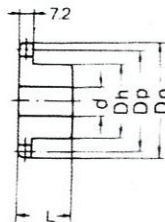
A TYPE



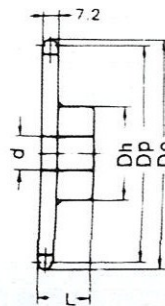
B TYPE



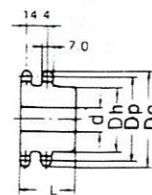
B TYPE



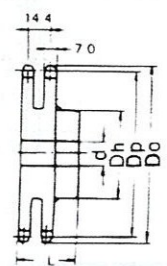
BW TYPE



DUPLEX B TYPE



DUPLEX BW TYPE



Dimension:mm

No. of Teeth	Pitch Dia Dp	Outside Dia Do	A Type			B Type / BW Type					Duplex B Type / Duplex BW Type						
			Bore : d	Approx. WT.(kg)	Material	Bore : d		Hub		Approx. WT (kg)	Material	Bore : d		Hub		Approx. WT (kg)	Material
						Min.	Max.	Dh	L			Min.	Max.	Dh	L		
8	33.20	38	9			9	12.7	24.6	22.2	0.10	*						
9	37.13	42	9	0.04		9	14	28	22	0.11	*						
10	41.10	46	10	0.05		9	18	32	22	0.14	*	13	15	28	35	0.24	
11	45.08	51	10	0.06		10	23	37	22	0.19	*	13	18	30	35	0.27	
12	49.07	55	10	0.08		10	25	40	22	0.22	*	14	22	35	35	0.34	
13	53.07	59	10	0.10		13	23	37	22	0.23	*	14	24	39	35	0.39	
14	57.07	63	10	0.11		13	26	42	22	0.28	*	14	26	43	35	0.47	
15	61.08	67	12	0.15		13	28	46	22	0.34	*	14	28	47	35	0.56	
16	65.10	71	12	0.17		13	30	50	22	0.40	*	14	30	50	35	0.65	
17	69.12	76	12	0.20		13	32	54	22	0.46	*	14	32	54	35	0.75	
18	73.14	80	12	0.22		13	32	57	22	0.51	*	14	35	59	35	0.85	
19	77.16	84	12	0.24		13	38	62	22	0.59	*	14	38	63	35	0.98	
20	81.18	88	12	0.26		14	42	67	25	0.76	*	14	40	67	40	1.30	
21	85.21	92	12	0.30		14	45	71	25	0.85	*	14	40	68	40	1.40	
22	89.24	96	12	0.32		14	48	75	25	0.95	*	14	45	72	40	1.60	
23	93.27	100	12	0.35		14	48	77	25	1.00	*	14	45	76	40	1.70	
24	97.30	104	12	0.37		14	40	63	25	0.84	*	14	50	80	40	1.90	
25	101.33	108	12	0.40		14	40	63	25	0.88	*	18	54	84	40	2.10	
26	105.36	112	12	0.45		14	40	63	25	0.92	S35C	18	54	88	40	2.30	
27	109.40	116	12	0.50		14	40	63	25	0.96	(B TYPE)	18	60	92	40	2.60	
28	113.43	120	12	0.51		14	40	63	25	1.00		18	65	96	40	2.80	
29	117.46	124	12	0.56		14	40	63	25	1.05		18	65	96	40	2.90	
30	121.50	128	14	0.60		14	40	63	25	1.10		18	65	100	40	3.00	
31	125.53	133	14	0.64	SS41	14	40	63	25	1.20		18	65	100	40	3.01	
32	129.57	137	14	0.68		14	45	68	28	1.30		23	65	100	50	3.00	
33	133.61	141	14	0.70		14	45	68	28	1.30		23	65	100	50	3.10	
34	137.64	145	14	0.75		14	45	68	28	1.30		23	65	100	50	3.10	
35	141.68	149	14	0.83		14	45	68	28	1.40		23	65	100	50	3.10	
36	145.72	153	15	0.90		17	45	68	28	1.40		23	65	100	50	3.40	
38	153.79	161	15	0.95		17	45	68	28	1.50		23	65	100	50	3.50	
40	161.87	169	15	1.06		17	45	68	28	1.60		23	65	100	50	3.60	
41	165.91	173	15	1.15		17	48	73	32	1.80							
42	169.95	177	15	1.20		17	48	73	32	2.00		23	65	93	50	4.50	
43	173.98	181	15	1.23		17	48	73	32								
44	178.02	185	15	1.30		17	48	73	32								
45	182.06	189	15	1.36		17	48	73	32	2.10		23	65	93	50	4.60	
48	194.18	201	15	1.53		17	48	73	32	2.30		23	65	93	50	5.60	
50	202.26	209	15	1.70		17	48	73	32	2.40		23	65	93	50	5.90	
54	218.42	226	15	2.00		17	48	73	32	2.80		23	65	93	50	6.91	
60	242.66	250	16	2.50		17	48	73	32	3.20	SS41	23	65	93	50	8.20	SS41
65	262.87	270	16	2.87		17	52	83	32	3.90	(BW TYPE)	23	65	93	50	9.50	(DUPLEX BW TYPE)
70	283.07	290	16	3.30		19	52	83	32	4.30		23	65	93	50	10.90	
75	303.28	311	16	4.50		19	52	83	32	4.80		23	65	108	50	12.50	
80	323.49	331	16	5.50		19	52	83	32	5.40		23	65	108	50	13.90	
85	343.69	351	19	5.80		19	52	83	32	5.80							
90	363.90	371	19	6.00		19	52	83	32	6.00							

NOTE: 1. Sprocket marked with an asterisk (*) has a groove at the external circumference of hub. Groove diameters (Dg) are : 8T=18.60mm, 9T=22.66mm, 10T=26.92mm, 11T = 31.00 mm, 12T=35.05mm.
2. B-type solid sprockets over 35 teeth made by S35C are available.