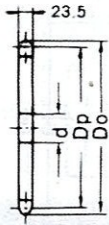
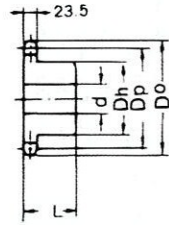


ANSI 120 Standard Sprocket

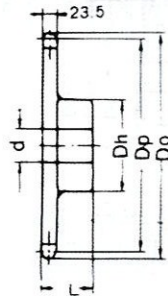
A TYPE



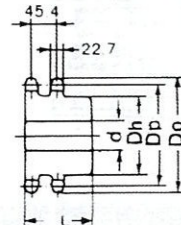
B TYPE



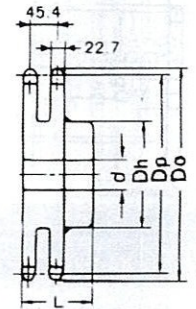
BW TYPE



DUPLEX B TYPE



DUPLEX BW TYPE



Dimension:mm

No. of Teeth	Pitch Dia Dp	Outside Dia Do	A Type			B Type / BW Type					Duplex B Type / Duplex BW Type						
			Bore : d	Approx. WT.(kg)	Material	Bore : d		Hub		Approx. WT (kg)	Material	Bore : d		Hub		Approx. WT (kg)	Material
						Min.	Max.	Dh	L			Min.	Max.	Dh	L		
10	123.29	140	25	1.80		25	50	78	56	3.20		26	50	80	100	6.00	
11	135.24	158	25	2.20		25	55	91	56	4.00		26	55	90	100	7.10	
12	147.21	165	25	2.60		25	60	98	56	4.80		28	65	100	100	8.80	
13	159.20	177	25	3.20		25	60	98	56	5.30		28	75	115	100	11.10	
14	171.22	190	25	3.60		25	65	107	56	6.30		28	80	120	100	11.40	
15	183.25	202	25	4.20		25	70	117	63	7.80	S35C	28	85	120	100	13.20	S35C
16	195.29	214	25	5.00		25	70	117	63	8.40	(B TYPE)	28	90	140	100	14.40	(DUPL
17	207.35	227	25	5.60		25	70	117	63	9.10		28	90	140	100	15.70	EX B
18	219.41	239	25	6.20		25	70	117	63	9.90		28	100	150	100	18.00	TYPE)
19	231.48	251	25	7.00		25	70	117	63	10.70		28	100	150	100	19.40	
20	243.55	263	25	7.80		25	80	127	63	12.10		28	100	150	100	21.00	
21	255.63	276	25	8.90		25	80	127	63	13.00		28	100	150	100	22.60	
22	267.72	288	30	9.80		30	80	127	63	13.40		30	100	147	100	32.60	
23	279.80	300	30	10.50		30	80	127	63	14.20		30	100	147	100	35.40	
24	291.90	312	30	11.50		30	80	127	63	15.20		30	100	157	100	31.00	
25	303.99	324	30	12.60		30	80	127	63	16.20		30	100	157	100	38.00	
26	316.09	337	30	14.00		30	80	127	63	17.20		30	100	157	100	40.00	
27	328.19	349	30	15.50		30	80	127	63	19.20		30	100	157	100		
28	340.29	361	30	16.50		30	85	137	71	20.90		30	100	157	100	42.60	
29	352.39	373	30	18.00		30	85	137	71	21.00		30	100	157	100		
30	364.50	385	30	19.00		30	85	137	71	23.20		30	100	157	100	43.90	
31	376.60	398	30	20.30		30	85	137	71	24.10		30	100	157	100		
32	388.71	410	30	21.50	SS41	30	85	137	41	25.70		30	100	157	100	52.00	
33	400.82	422	30	22.40		30	85	137	71	26.80		30	100	157	100		
34	412.93	434	30	24.50		30	85	137	71	28.20		30	100	157	100		
35	425.04	446	30	26.00		30	85	137	71	29.70		30	100	157	100	56.80	
36	437.15	458	30	27.50		30	85	137	71	30.00		30	100	157	100		
37	449.26	470	30			30	85	137	71								
38	461.38	483	30	31.00		30	85	137	71	31.40	SS41	30	100	157	100		SS41
39	473.49	495	30			30	85	137	71		(BW TYPE)						(DUPL
40	485.60	507	30	34.00		30	90	147	80	38.20		30	115	177	100	81.30	EX
41	497.72	519	30			30	90	147	80								TYPE)
42	509.84	531	30	38.00		30	90	147	80	42.00		30	115	177	100		
43	521.95	543	30			30	90	147	80								
45	546.19	568	30	43.00		30	90	147	80	47.60		30	115	177	110	98.50	
48	582.54	604	30	49.00		30	90	147	80	53.00		30	115	177	110	110.00	
50	606.78	628	30	54.00		30	90	147	100	53.80		30	115	177	110	126.00	
54	655.26	677	30	60.00		30	90	147	100	54.70		30	115	177	110	129.00	
55	667.38	689	30			30	90	147	100			30	115	177	110	130.00	
56	679.50	701	30			30	90	147	100								
57	691.63	713	30			30	90	147	100								
58	703.75	726	30			30	90	147	100								
60	727.99	750	30	71.5		30	90	147	100	67.80		30	115	177	110	131.60	
65	788.60	811	30	89.2		30	90	147	100	78.30							
70	849.22	871	30	104.00		30	105	167	112	82.30							
75	909.84	932	30	119.00		30	105	167	112	90.40							

NOTE :1. B-type solid sprockets over 21 teeth made by S35C are available.